



Button Handle Kwik-Lok® Pin MS17984, NAS 1333-1343



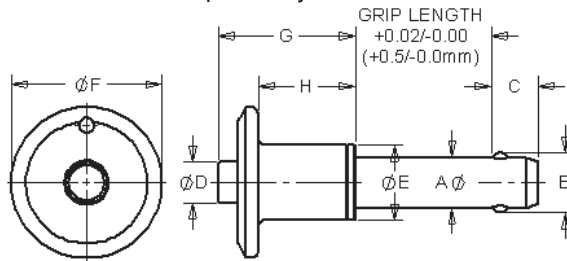
A3=Aluminum Button Handle

- The Button Handle Kwik-Lok® Pin is ideal for applications that have limited space around the handle.
- Light weight 2024 Aluminum Alloy handle with 2024 blue anodized aluminum button.
- Pin body Heat Treated 17-4 PH Stainless Steel.
- Includes hole and split ring for easy attachment of optional lanyard.



C3=Stainless Button Handle

- Heavy Duty solid handle in 303 series stainless steel provides additional impact resistance
- Includes hole and split ring for easy attachment of optional lanyard.
- All stainless steel construction provides additional corrosion resistance
- Body is made from high Strength Stainless Steel, 17-4 PH heat treated
- Meets or exceeds NASM 23460 specifications
- May be ordered with 4 locking balls for additional locking element tensile strength



Button Handle Specifications – Inch

DIA	A MIN	A MAX	B +/- .005	C +0.00 / -0.04	D MIN	D MAX	E MIN	E MAX	F MIN	F MAX	G MAX	H MIN
3/16	0.1875	0.1885	0.220	0.260	0.250	0.310	0.310	0.440	0.720	0.800	0.830	0.480
1/4	0.2470	0.2485	0.289	0.290	0.250	0.310	0.310	0.440	0.720	0.800	0.890	0.480
5/16	0.3095	0.3110	0.375	0.330	0.250	0.310	0.410	0.490	0.810	1.135	0.930	0.480
3/8	0.3720	0.3735	0.440	0.365	0.300	0.390	0.450	0.570	0.875	1.135	1.040	0.620
7/16	0.4345	0.4360	0.509	0.380	0.300	0.390	0.550	0.625	0.940	1.400	1.160	0.620
1/2	0.4970	0.4985	0.594	0.460	0.435	0.565	0.600	0.725	1.300	1.400	1.190	0.720
9/16	0.5595	0.5610	0.666	0.510	0.435	0.565	0.680	0.760	1.400	1.650	1.410	0.950
5/8	0.6220	0.6235	0.750	0.580	0.450	0.580	0.750	0.865	1.530	1.700	1.500	0.950
3/4	0.7470	0.7485	0.887	0.670	0.570	0.700	0.865	1.000	1.790	1.900	1.680	1.140
7/8	0.8720	0.8735	1.046	0.760	0.700	0.840	0.865	1.000	2.120	2.250	1.985	1.270
1	0.9970	0.9985	1.209	0.890	0.750	0.950	1.175	1.250	2.120	2.250	2.140	1.490

Button Handle Specifications – Metric

DIA	A MIN	A MAX	B +/- .13	C +0.00 / -1.00	D MIN	D MAX	E MIN	E MAX	F MIN	F MAX	G MAX	H MIN
5MM	4.92	4.96	5.54	6.0	6.4	7.9	7.9	11.2	18.3	20.3	21.1	12.2
6MM	5.92	5.96	6.99	7.0	6.4	7.9	7.9	11.2	18.3	20.3	22.6	12.2
8MM	7.92	7.96	9.42	8.0	6.4	7.9	10.4	12.4	20.6	28.8	23.6	12.2
10MM	9.92	9.96	11.86	9.0	7.6	9.9	11.4	14.5	22.2	28.8	26.4	15.7
12MM	11.92	11.96	14.45	10.0	7.6	9.9	14.0	15.9	23.9	35.6	29.5	15.7
16MM	15.92	15.96	19.00	14.0	11.4	14.7	19.1	22.0	38.9	43.2	38.1	24.1
20MM	19.92	19.96	24.08	17.0	14.5	17.8	22.0	25.4	45.5	48.3	42.7	29.0
25MM	24.92	24.96	30.94	22.0	19.1	24.1	29.8	31.8	53.8	57.2	54.4	37.8

Dimensions in millimeters

May be ordered with 4 locking balls for additional locking element tensile strength.
Special Materials, grip length and longer “C” dimensions upon request.



Button Handle – Inch

Aluminum Button, Heat Treated Stainless Steel 17-4 PH Body

Table with columns: Pin Dia, Grip Length (In) (0.5 to 6), and Part Numbers (3/16 to 1).

Stainless Steel Button, Heat Treated Stainless Steel 17-4 PH Body

Table with columns: Pin Dia, Grip Length (In) (0.5 to 6), and Part Numbers (3/16 to 1).

Button Handle – Metric

Aluminum Button, Heat Treated Stainless Steel 17-4 PH Body

Table with columns: Pin Dia, Grip Length (Metric) (10 to 100), and Part Numbers (5 to 25).

Stainless Steel Button, Heat Treated Stainless Steel 17-4 PH Body

Table with columns: Pin Dia, Grip Length (Metric) (10 to 100), and Part Numbers (5 to 25).

Contact customer service for other sizes.

May be ordered with 4 locking balls for additional locking element tensile strength.

KWIK-LOK® PINS